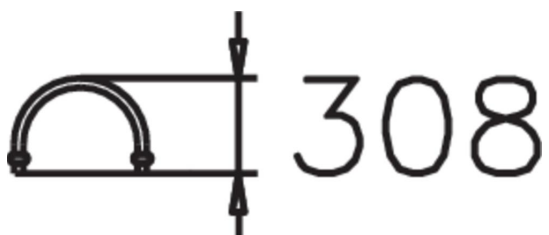





Dual-approach bicycle parking. Traditional free-standing cycle rack with space for a total of 9 bikes. The rack can be approached from either side and is free-standing.



|                              |   |
|------------------------------|---|
| Number of users              | 0   |
| Installation time (for 1), H | 0   |
| Foundation options           | Free standing   |
| Metal colour                 |  |